

# AlloMend<sup>®</sup> DUO

## ACELLULAR DERMAL MATRIX



### The Natural Solution for Soft Tissue Reconstruction

AlloMend Duo Acellular Dermal Matrix (ADM) is a human-derived, non-directional allograft that incorporates into surrounding tissue and provides a scaffold for cell repopulation and regeneration of the natural host tissues.<sup>1</sup> This deep reticular dermal allograft is used for soft tissue reconstruction, helping surgeons repair and reconstruct soft tissue defects for long-term structural support.

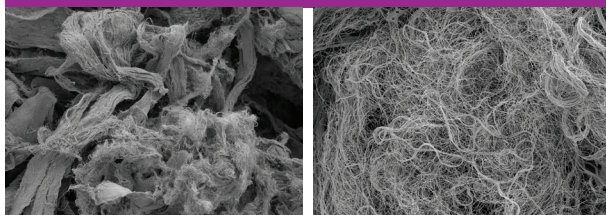
### ⊕ THE BENEFITS OF ALLOMEND DUO

<b>Flexible and Pliable</b>	Provides optimal handling characteristics enabling precision placement
<b>Packaged Pre-Hydrated</b>	Packaged in sterile water, immediately ready to use with room temperature storage
<b>High Suture Retention Strength</b>	Average suture retention strength of >39N/mm <sup>2</sup> for assurance during application <sup>2</sup>
<b>Terminally Sterilized</b>	Irradiated using e-beam technology to minimize the risk of infection
<b>Precisely Processed</b>	Consistent thickness and size through proprietary splitting and cutting technologies

### ⊕ Dual-sided Reticular Dermal Matrix for Non-Directional Implantation

Nearly equivalent tissue structures on both sides of the allograft for ease of use and increased confidence.

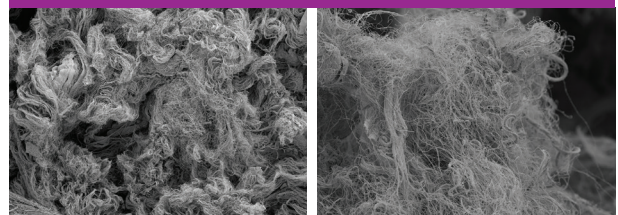
**ALLOMEND DUO SUPERFICIAL DERMAL SURFACE**



200X Magnification

1000X Magnification

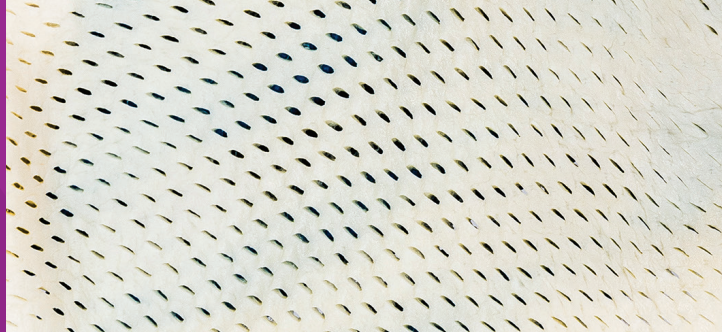
**ALLOMEND DUO DEEP DERMAL SURFACE**



200X Magnification

1000X Magnification

# AlloMend<sup>®</sup> Duo



## AlloMend<sup>®</sup> Duo ACELLULAR DERMAL MATRIX

### Deep Reticular Dermal Allograft

MESH	THICKNESS	WIDTH	LENGTH	AREA	REF/PRODUCT #
Non-Meshed	1.0-2.0 mm	2 cm	4 cm	8 cm <sup>2</sup>	78083008
Non-Meshed	1.0-2.0 mm	4 cm	8 cm	32 cm <sup>2</sup>	78083032
Non-Meshed	1.0-2.0 mm	6 cm	12 cm	72 cm <sup>2</sup>	78083072
Non-Meshed	1.0-2.0 mm	8 cm	10 cm	80 cm <sup>2</sup>	78083080
Non-Meshed	1.0-2.0 mm	8 cm	12 cm	96 cm <sup>2</sup>	78083096
1:1	1.0-2.0 mm	4 cm	16 cm	64 cm <sup>2</sup>	78383064
1:1	1.0-2.0 mm	6 cm	12 cm	72 cm <sup>2</sup>	78383072
1:1	1.0-2.0 mm	8 cm	10 cm	80 cm <sup>2</sup>	78383080
1:1	1.0-2.0 mm	8 cm	12 cm	96 cm <sup>2</sup>	78383096
1:1	1.0-2.0 mm	8 cm	16 cm	128 cm <sup>2</sup>	78383128
1:1	1.0-2.0 mm	8 cm	20 cm	160 cm <sup>2</sup>	78383160
1:1	1.0-2.0 mm	16 cm	20 cm	320 cm <sup>2</sup>	78383320

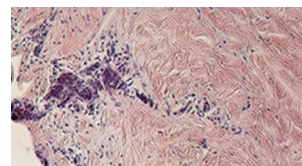


**CALL CUSTOMER SERVICE**  
800. 557. 3587

## ⊕ DermaTrue<sup>™</sup> DECELLULARIZATION PROCESS

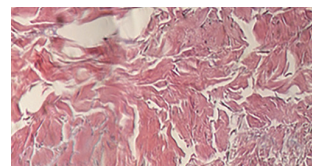
AlloMend Duo ADM is created using AlloSource's proprietary DermaTrue Decellularization Process to remove cellular debris (including DNA, RNA, proteins and antigens), without the use of harsh detergents or enzymes which can leave residuals in the tissue. The dermal tissue is rendered acellular, contributing to a low immunologic response, while retaining growth factors and maintaining the morphological collagen structure.<sup>3</sup>

H&E (hematoxylin and eosin) stain review of "before and after" decellularization process.



**BEFORE**

Noticeable large number of well-defined cell nuclei (purple)



**AFTER**

Absence of identifiable defined nuclei; no viable cells present

1. Stillwell R., Delaney R. The biomechanics of acellular dermal matrix biocompatibility study. *AlloSource White Paper*. 2016; 00088-LIT(001).
2. Data on File.
3. Delaney R., Stilwell R. The biologic properties of allomend acellular dermal matrix: growth factor study. *AlloSource White Paper*. 2016; 00104-LIT [001].

## ABOUT ALLOSOURCE

AlloSource<sup>®</sup>, one of the largest human tissue providers, honors tissue donors by creating innovative dermal, cartilage, tendon, fascia, bone, amniotic, and living cellular allografts to help heal patients. Since 1994, the company has continued to advance its allografts to improve patient outcomes, serving as a trusted tissue partner to the medical community.

AlloMend<sup>®</sup> Duo Acellular Dermal Matrix is regulated by the FDA under 21 CFR Part 1271 Human Cells, Tissues, and Cellular and Tissue-Based Products (HCT/Ps). AlloSource is registered with the FDA as a tissue establishment and accredited by the American Association of Tissue Banks.

6278 S Troy Cir  
Centennial, CO 80111  
USA

MAIN 720. 873. 0213

allosource.org

